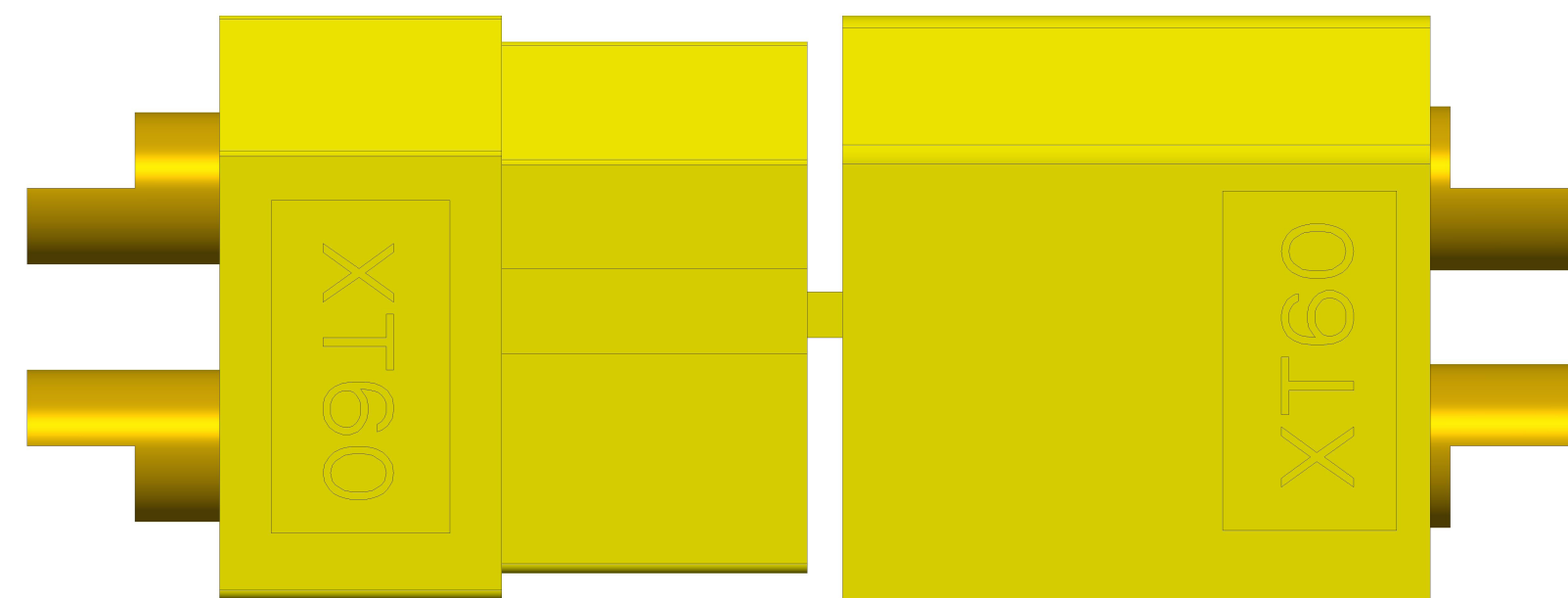
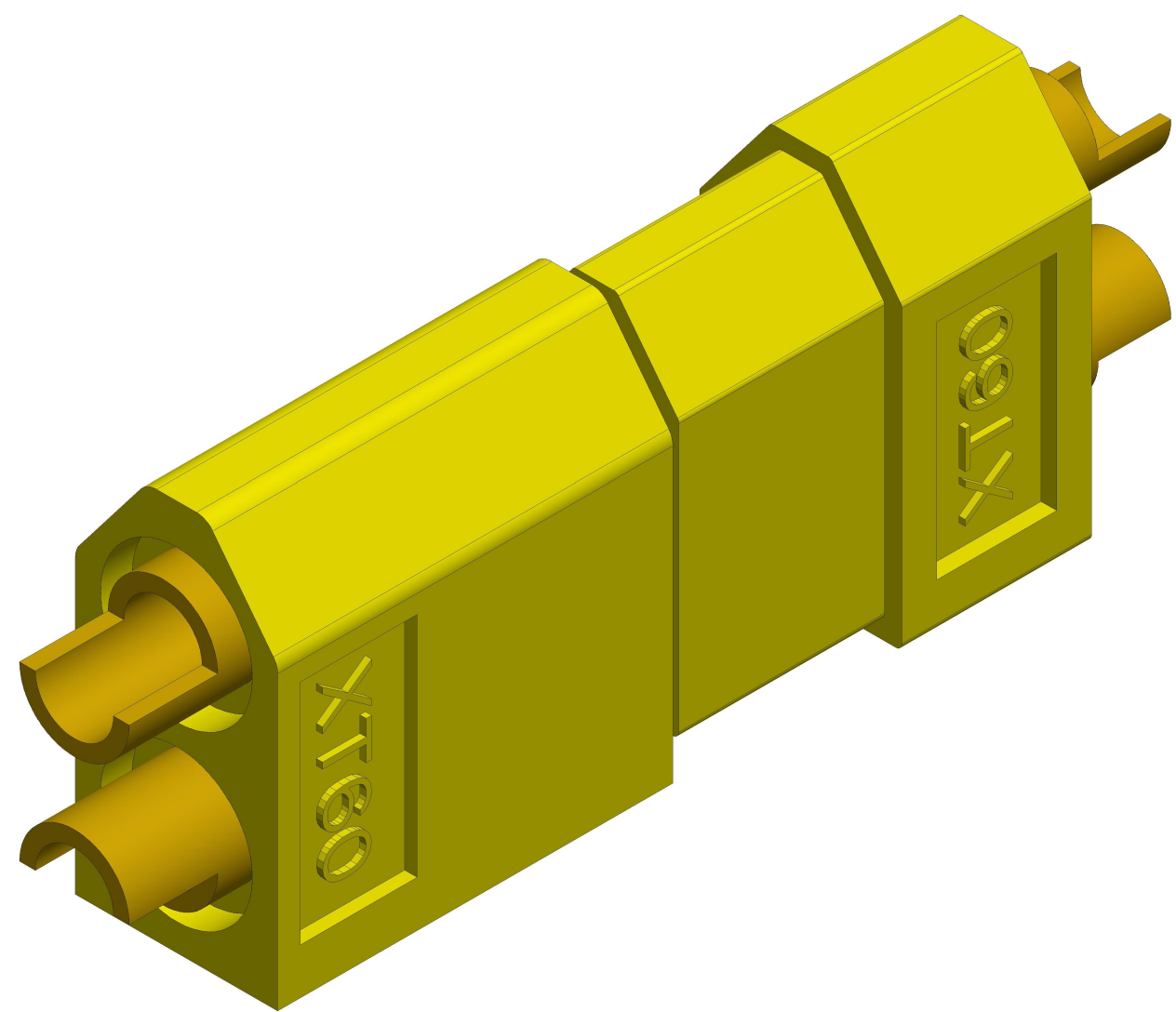
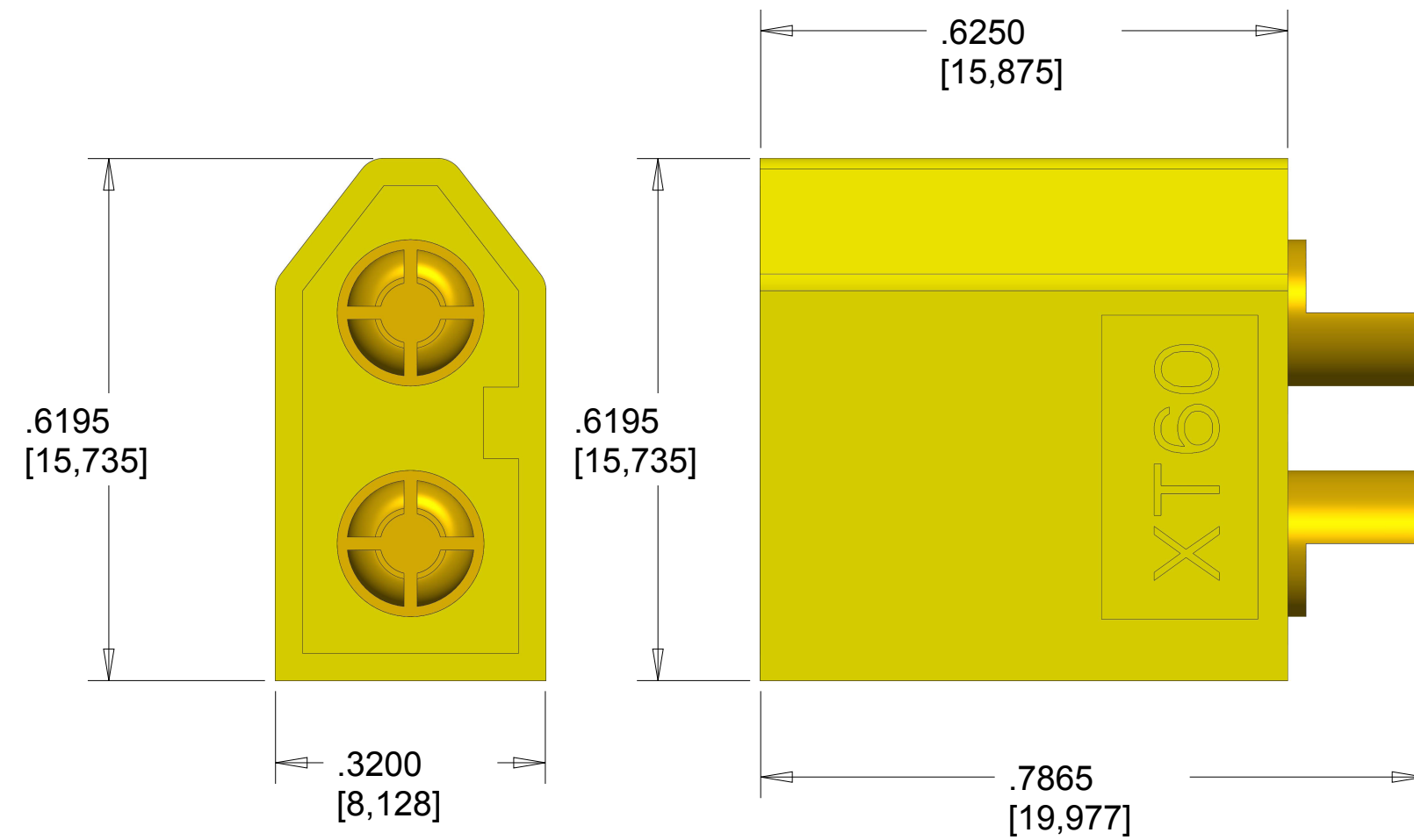
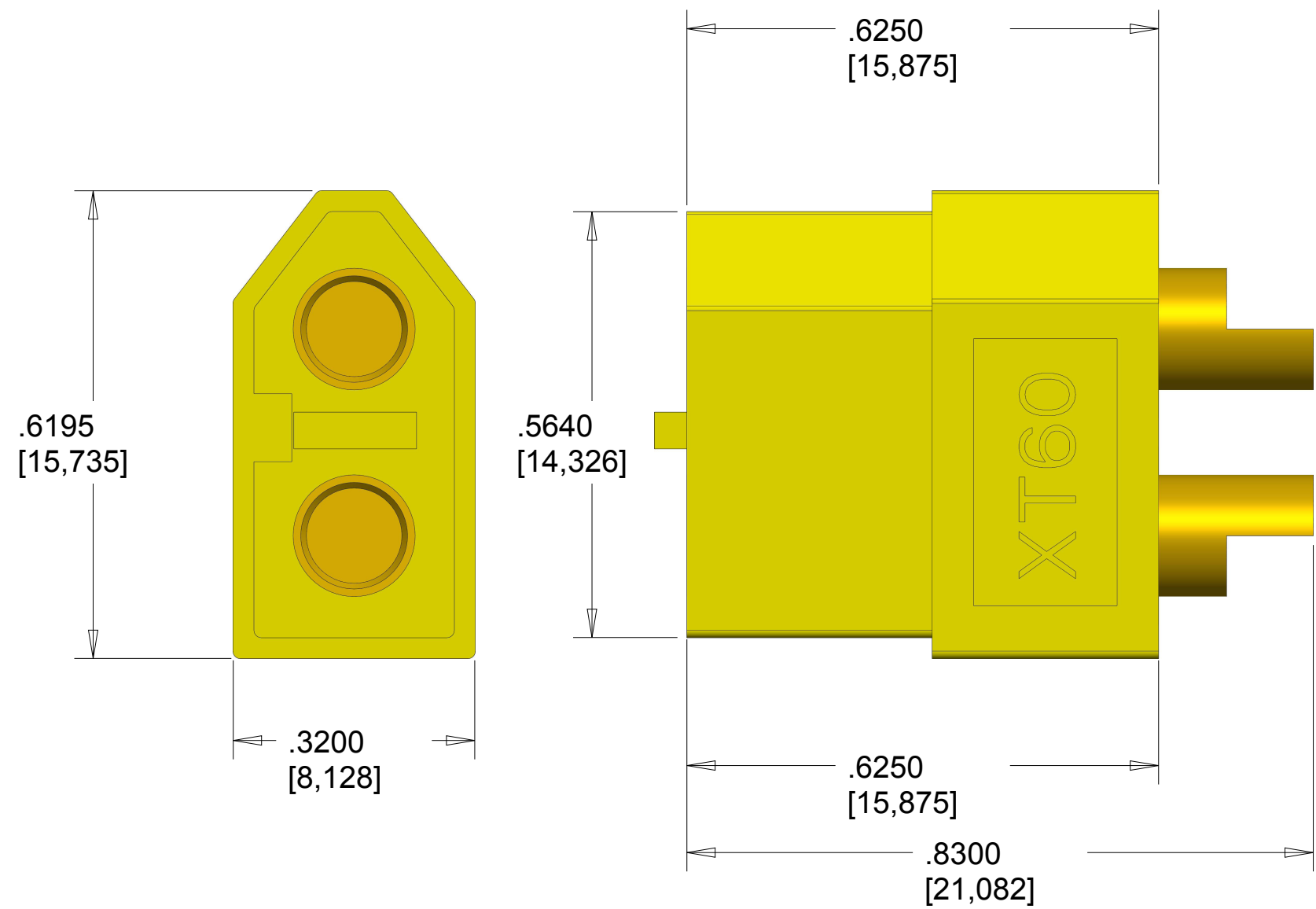


4

3

2

1



SCALE 5.000

<p>These connectors are made from high-temp nylon with gold-plated spring pins or sockets molded in. The shape of the XT60 prevents reverse polarity, and when plugged in the connection is super-solid. Perfect for applications up to and beyond 65A continuous draw. Sold in pairs of 1 male and 1 female connector.</p> <p>NOTES:</p>	MATERIAL:	Nylon + Metal	MODEL NAME:	XT60 Connector
	XT60 Connectors - Male/Female Pair PRT-10474		<a href="https://www.sparkfun.com/products/10474">https://www.sparkfun.com/products/10474</a>	
	DESCRIPTION:		PAGE SIZE C 22 x 17 INCH	
	DRAWN BY:	Paul Smith	SCALE:	5.00
	DATE:	10 July 2013	UNITS:	inch [mm]
CAD APPLICATION: Creo Parametric 2.0		VER:	1.0	SHEET 1 / 1



4

3

2

1

# Mouser Electronics

Authorized Distributor

Click to View Pricing, Inventory, Delivery & Lifecycle Information:

[SparkFun Electronics:](#)

[PRT-10474](#)